

***Apogonia reticulata* Frey, 1969 – a new and surprising junior
subjective synonym for *A. cribricollis* Burmeister, 1855
(Coleoptera: Scarabaeidae: Melolonthinae: Diplotaxini)**

ALEŠ BEZDĚK

*Biology Centre ASCR, Institute of Entomology, Branišovská 31, CZ-370 05 České Budějovice,
Czech Republic; e-mail: bezdek@entu.cas.cz*

BEZDĚK A. 2013: *Apogonia reticulata* Frey, 1969 – a new and surprising junior subjective synonym for *A. cribricollis* Burmeister, 1855 (Coleoptera: Scarabaeidae: Melolonthinae: Diplotaxini). *Acta Musei Moraviae, Scientiae biologicae* (Brno) 97(1): 85–97. – Examination of type specimens of *Apogonia reticulata* Frey, 1969 leads to the conclusion that the name is a junior subjective synonym of *Apogonia cribricollis* Burmeister, 1855. The type locality of *A. reticulata* is discussed and the assertion made that this species has previously been described on the basis of mislabelled specimens collected in the Oriental region. *Apogonia cribricollis* is redescribed, compared with closely related species, and its geographical distribution is mapped.

Key words. Taxonomy, lectotype designation, new synonymy, type locality, Coleoptera, Scarabaeidae, Melolonthinae, Diplotaxini, *Apogonia*

Introduction

FREY (1969) described *Apogonia reticulata* on the basis of two females from the collection of the Moravian Museum, Brno, in the Czech Republic. Both specimens are labelled as collected in “Ethiopie, Harar”. The holotype is held in MMBC, while the only paratype became part of the personal collection of Georg Frey, now deposited in NHMB. The differential diagnosis of *A. reticulata* was a very vague: “Durch die Halschildskulptur von allen afrikanischen *Apogonia*-Arten verschieden” (FREY 1969: 184). Examination of the complete type series of *A. reticulata* revealed an interesting surprise. FREY (1969) probably overlooked (or did not examine) the shape of the protibia of his new species. The outer margin of the protibia in both specimens bears a distinct angle in the basal third (Fig. 2). This character is well known in several Oriental species (see e.g., BEZDĚK 2008), but not to date for any known Afrotropical *Apogonia*. The description of *A. reticulata* was thus very probably based on mislabelled specimens. Moreover, comparison of the holotype and paratype of *A. reticulata* reveals that they belong to different species. The holotype is without any doubt conspecific with the Oriental *Apogonia cribricollis* Burmeister, 1855. The identity of the paratype is not fully clear. Its head is distinctly broader than that of *A. cribricollis*, and the apical part of the elytra is smooth and lustrous. It therefore belongs to the cluster of morphologically similar species that includes *A. dalatensis* Frey, 1971, *A. expeditionis* Ritsema, 1896, *A. diversicollis* Moser, 1914 and some others, the identification of which is nearly impossible based upon only females. Although the identity of the paratype of *A. reticulata* is not fully resolved, the status of the holotype as a name-bearing type is clear and *A. reticulata* is proposed here as a junior subjective synonym of *A. cribricollis*.

Description of new species on the basis of mislabelled specimens occurs quite frequently in Scarabaeoidea. For example, *Parascarabaeus tonkineus* Balthasar, 1961 (mislabelled as coming from northern Vietnam) was reduced to a junior synonym of African *Sceliages augias* Gillet, 1908 by BALTHASAR himself (1968) and by MOSTERT & SCHOLTZ (1986). Similarly, SCHEUERN (1988) studied the type material of *Liatongus triacanthus* (Boucomont, 1920) originally labelled as collected in “Matabéléland” [= western part of Zimbabwe] and found out that it was in fact a Himalayan species.

Material and methods

The following abbreviations identify the collections housing the material examined (curators' names in parentheses):

ABCC	Aleš Bezděk collection, České Budějovice, Czech Republic
ARCL	Andreas Reichenbach collection, Leipzig, Germany
BMNH	The Natural History Museum, London, United Kingdom (Malcolm Kerley, Maxwell V. L. Barclay)
HKCT	Hirokazu Kobayashi collection, Tokyo, Japan
ISNB	Institut Royal des Sciences Naturelles de Belgique, Brussels, Belgium (Alain Drumont)
MFNB	Museum für Naturkunde, Leibniz-Gemeinschaft, Berlin, Germany (Joachim Willers, Johannes Frisch)
MLUH	Martin-Luther-Universität, Wissenschaftsbereich Zoologie, Halle, Germany (Karla Schneider)
MMBC	Moravian Museum, Brno, Czech Republic (Jiří Kolibáč)
MSNG	Museo Civico di Storia Naturale Giacomo Doria, Genoa, Italy (Roberto Poggi, Maria Tavano)
NHMB	Naturhistorisches Museum, Basel, Switzerland (Eva Sprecher-Uebersax, Isabelle Zürcher-Pfander)
NHRS	Naturhistoriska Riskmuseet, Stockholm, Sweden (Bert Viklund)
NMEC	Naturkundemuseum, Erfurt, Germany (Matthias Hartmann)
NMPC	National Museum (Natural History), Prague, Czech Republic (Jiří Hájek)
PACC	Paul Aston collection, Lantau Isl., Mui Wo, Hong Kong, China
PPCB	Petr Pacholátko collection, Brno, Czech Republic
RMNH	Naturalis – Nationaal Natuurhistorisch Museum, Leiden, The Netherlands, (Alfred van Assen, Eulália Gassó Miracle)
SDEI	Senckenberg Deutsches Entomologisches Institut, Müncheberg, Germany (Lutz Behne, Stephan Blank)
UMRM	W.R. Enns Entomology Museum, University of Missouri, Columbia, Missouri, USA (Robert W. Sites)
ZFMK	Zoologisches Forschungsmuseum Alexander Koenig, Bonn, Germany (Dirk Ahrens)
ZMUC	Zoologisk Museum, København Universitet, Denmark (Sergey Solodovnikov)

A total of 378 specimens (see material below) were studied. The genitalia of more than 100 males were dissected for examination. Specimens were examined with an Olympus SZX9 stereo-microscope while measurements were taken with an ocular grid. The habitus photographs were taken using a Canon MP-E 65mm/2.8 1–5× macro lens on bellows attached to a Canon EOS 550D camera. Partially-focused images of each specimen were combined using Helicon Focus 3.20.2 Pro software.

Article 74.7.3 of the ICZN (1999) requires that the designation of lectotypes after 1999 must contain an express statement of the taxonomic purpose of the designation. The lectotype is here designated for *Apogonia cribricollis* Burmeister, 1855; I consider that this lectotype is necessary for the taxon in order to preserve the stability of nomenclature.

Exact label data are cited for the material examined. Separate labels are indicated by double slash //, lines within each label are separated by a slash /. Information in quotation marks follows original spelling. Author's remarks and additional comments are placed in square brackets: [p] – preceding data (within quotation marks) are printed; [h] – the same but handwritten. HT – holotype, LT – lectotype, PT – paratype.

Taxonomy

Apogonia cribricollis Burmeister, 1855

(Figs 1–3, 5–7, 11)

Apogonia cribricollis Burmeister, 1855: 256 (description); GEMMINGER & HAROLD 1869: 1156 (catalogue); RITSEMA 1891: 94 (catalogue); BARLOW 1899: 251; MOSER 1908: 331; DALLA TORRE 1912: 137 (catalogue); WU 1937: 1024 (catalogue); ARROW 1946: 20; STEBNICKA 1980: 262; SABATINELLI 1993: 600 (catalogue); KIM 2001: 22; PENG, YANG, WANG, ZHOU & LUO 2002: 631 (ecology); ZHANG & LUO 2002: 443; BEZDĚK 2004: 17 (catalogue); ZHI & ZHANG 2005: 289; BEZDĚK 2006: 182 (catalogue); ZHANG & ZHI 2006: 183.

Apogonia miurai Kobayashi, 2009: 33 (description, type locality: “Vangvieng, P. Vientiane, Laos”); KOBAYASHI 2010: 51 (syn. of *A. cribricollis*).

Apogonia reticulata Frey, 1969: 184 (description, type locality: “Ethiopie, Harar”); BEZDĚK 2004: 42 (catalogue), LACROIX 2010: 61 (catalogue), **syn. nov.**

Type locality. “China, Hongkong”.

Type material examined. *Apogonia cribricollis* Burmeister, 1855. LT (by present designation, male), labelled: “China [h] // Apogonia cribricollis / Burmeister, 1855 / LECTOTYPUS, ♂ / des. A. Bezděk 2013 [p, red label]”, in MLUH.

Apogonia miurai Kobayashi, 2009. PT (male), labelled: “Vangvieng / P. Vientiane / LAO. P.D.R. / 25–26. MAY. 1994. / K. Miura – leg. [p] // PARATYPE / Apogonia / miurai / H.Kobayashi, 2009 [p, yellow label, black frame]”, in ABCC.

Apogonia reticulata Frey, 1969. HT (female), labelled: “♀ [p] // ETHIOPIE, / Harar, 1960 / leg. Dr. Cakl [p] // Holo- / typus [p, red label, black frame] // TYPE [p, red label] // Mor. museum, Brno [p] // Type / Apogonia / reticulata [h, Frey's manuscript] / det. G. Frey, 1967/68 [p] / n. sp. [h] // Invent. č. [p] / 900 Ent. [h] / Mor. museum, Brno [p]”, in MMBC.

Additional material examined. Cambodia: “Cambodge / Kompong Kadey / Vitalis lgt. [h] // COLL. ACHARD / MUS. PRAGENSE [p]”, 1 male and 1 female in NMPC; “Cambodge / Sam Rong / III. 1913 / ex Oberthür [h]”, 1 male and 1 female in ISNB; “CAMBODIA: Sihanouk / ville env., h=20 m / 10°40'2"N 103°33'4"E / 23.–24.XI.99 M. & S. / Murzin leg. [p]”, 1 male and 1 female in ABCC; “Coll. R.I.Sc.N.B. / CAMBODIA Siem Reap / 02–03.II. 2003 / leg. Stéphane De Greef / Neon Light trap [p, yellow label]”, 5 unsexed specimens in ISNB; “Coll. R.I.Sc.N.B. / CAMBODIA / Siem Reap, Light Trap / 25.–27.IV.2003 / leg. S. Degreef [p, yellow label]”, 1 male in ABCC, 17 unsexed specimens in ISNB; “Coll. R.I.Sc.N.B. / CAMBODIA / (Siem Reap Prov.) / Angkor Thom / 26-V-2003 Light Trap / Leg. Constant&K.Smets [p, yellow label]”, 1 male in ABCC, 1 male and 5 unsexed specimens in ISNB; “Coll. I.R.Sc.N.B. / CAMBODIA – Kbal / Spean (ACCB) – Phom Kulen NP / 24.VII.2004 (24038) / Leg. P. Grootaert [p, yellow label]”, 5 unsexed specimens in ISNB; “Coll. R.I.Sc.N.B. / CAMBODIA, Pursat prov. / Phnom Samkos W.S. / Primaval, forest edge / 13-IV-2005, Light Trap / Leg. K.Smets&I.Var [p, yellow label]”, 1 male in ABCC; “Coll. R.I.Sc.N.B. / CAMBODIA / (Siem Reap prov.) / Kbal Spean, Light Trap / 28. V. 2005 / Leg. Var&Grootaert [p, yellow label]”, 1 male in ABCC, 5 unsexed specimens in ISNB; “Coll. I.R.Sc.N.B. / CAMBODIA (Siem Reap prov.)”

/ Kbal Spean, day catch / 28-29-V-2005 / Leg I. Var&P. Grootaert [p, yellow label]”, 1 unsexed specimen in ISNB; “Coll. I.R.Sc.N.B. / CAMBODIA / Siem Reap / Hand catch garden / 24-VI-2005 / Leg. J. Goossens [p, yellow label]”, 1 male in ISNB; “Coll. R.I.Sc.N.B. / CAMBODIA / Bataey Menchay Prov. / Ang Trapeang Thom / Forest Malaise Trap / 05-12/VIII/2005 / Leg. Ranger [p, yellow label]”, 1 male in ISNB; “Coll. I.R.Sc.N.B. / Cambodia, Siem Reap prov. / Praeh Khan temple (Angkor) / 18.-25.ix.2005 Malaise trap / leg. Daniel R. Jump [p, yellow label]”, 1 male in ISNB; “CAMBODIA, Siem Reap prov. / ANGKOR WAT / 13°25'18"N, 103°51'13"E / 30.1.2006, alt. 30m / lgt. Bečvář S. & Fouqué R.+H. [p]”, 1 male in ABCC; “Coll. R.I.Sc.N.B. / Cambodia Siem Reap / Light trap, garden / 23.-28.vi.2006 / leg. K. Smets & K. Gielen [p, yellow label]”, 1 male in ABCC, 3 males and 3 females in ISNB; “Coll. I.R.Sc.N.B. / CAMBODIA / Siem Reap Prov. / Phnom Kulen N.P. / Forest Near / Prean Thom / 26-27-VII-2006 / Leg. K. Smets, Y. Oul / & D. Jump [p, yellow label]”, 1 male and 1 female in ISNB; “Coll. R.I.Sc.N.B. / CAMBODIA / Siem Reap prov. / SW-Suburban garden / At Light / 23-28-VII-2006 / Leg. K. Smets & K. Gielen [p, yellow label]”, 1 male in ISNB; “Coll. R.I.Sc.N.B. / CAMBODIA / Siem Reap / XII-2006-III-2007 / Leg. Mikis Putzeys [p, yellow label]”, 1 male in ABCC, 2 males in ISNB; “KAMBODSCHA: / Botum Sakor Ntl. P. / 10-15 IV 2011, leg. / Dr. Kristian Franze [p, yellow label]”, 1 female in ARCL; “CAMBODIA SW, 20 km / SE KOH KONG, Tatai river / 11°34'N, 103°07'E / 17.x.-15.xi.2011, 50-300m / Z. Linek lgt. [p]”, 1 male in ABCC.

China (Fujian): “Shaowu – Fukien / (500m) J. Klapperich / 3.6 1937 [p, violet label]”, 1 male in ABCC, 4 males and 1 female NMPC (coll. Balthasar); “Shaowu – Fukien / (500m) J. Klapperich / 11.5 1937 [p, violet label]”, 1 male in NMPC (coll. Balthasar); **China (Guangdong):** “Canton (China) [p] / X.-XI. [h] 08 / R. Mell S.G. [p, yellow label]”, 3 males and 4 females in MFNB; **China (Guangxi):** “Kwangsi, China / V. 16. 1938 [h]”, 1 male in BMNH; “China, Kwangsi / Umgeg. v. Nanning / 1931 / Slg. R. Oberthür / Eing. Nr. 4, 1956 [p, ochreous label]”, 1 female in ZFMK; **China (Guizhou):** “CHINE / Kouy-Tchéou / Kouy Yang Fou // Coll. on LE MOULT / Naturaliste / Paris [p]”, 1 male in ISNB; **China (Hainan):** “Ile Hainan / Chine [p]”, 1 male in ISNB; “CHINA-HAINAN-2002 / WuzhiShan- 11.-13.5. / 18°52'N 109°40'E / 700m- Dr.R. Fencel lgt. [p]”, 1 female in ABCC; “CHINA, Hainan Isl., 4.-6.v.2011 / Limushan Mts. / first administr. centre (at light) / 19°10'30"N, 109°44'33"E, 630 m / M. Fikáček, V. Kubeček & L. Li leg. [p]”, 1 female in NMPC; **China (Hong Kong):** “Hongkong / Faber. [h, yellow label] // 61091 [p]”, 1 female in MFNB; “Hong / kong [h] // H. SIMON [p] // Coll. Kraatz [p]”, 1 male in SDEI; “Hongkong [h] // Coll. Kraatz [p]”, 1 male and 1 female in SDEI; “# 10 of 15.IV.06 / Wang Tong / Lantau HK [h, upper side] // coll. Paul Aston / Hong Kong, China [p, under side]”, 1 female in PACC; “# 3 of 5.V.06 / Wang Tong / Lantau HK [h, upper side] // coll. Paul Aston / Hong Kong, China [p, under side]”, 1 male in PACC; “# 7 of 16.IV.07 / Wang Tong / Lantau HK [h, upper side] // coll. Paul Aston / Hong Kong, China [p, under side]”, 1 female in PACC; “# 1 of 23.IV.07 / Wang Tong / Lantau HK [h, upper side] // coll. Paul Aston / Hong Kong, China [p, under side]”, 1 female in ABCC; “# 2 of 25.IV.07 / Wang Tong / Lantau HK [h, upper side] // coll. Paul Aston / Hong Kong, China [p, under side]”, 1 female in ABCC; “# 19 of 27.IV.07 / Wang Tong / Lantau HK [h, upper side] // coll. Paul Aston / Hong Kong, China [p, under side]”, 1 male in ABCC; “# 9 of 1.V.07 / Wang Tong / Lantau HK [h, upper side] // coll. Paul Aston / Hong Kong, China [p, under side]”, 1 female in PACC; “# 29 of 5.V.07 / Wang Tong / Lantau HK [h, upper side] // coll. Paul Aston / Hong Kong, China [p, under side]”, 1 male in PACC; “# 1 of 7.V.07 / Wang Tong / Lantau HK [h, upper side] // coll. Paul Aston / Hong Kong, China [p, under side]”, 1 female in PACC; “# 1 of 25.VIII.08 / Wang Tong / Lantau HK [h, upper side] // coll. Paul Aston / Hong Kong, China [p, under side]”, 1 female in PACC; **China (Yunnan):** “CHINA, S - YUNNAN / Xishuangbanna, 23km / NW Jinghong, Na Ban / Village (NNNR) [p] // Leg. A. Weigel / N 22°10'04", E 100° / 39'52", 680m, 05.VI. / 2008, station, LF [p]”, 1 male in NMEC; **China (province unknown):** “Chine [p] // Coll. Kraatz [p]”, 1 male in SDEI; “Chine / Kweiksien [p]”, 1 male in ABCC.

Laos: “Laos / Xieng Khouang / 23. IV. 1919 / R.V. de Salvaza [p]”, 2 females in BMNH; “Laos / Xieng Khouang / 29. IV. 1919 / R.V. de Salvaza [p]”, 1 female in BMNH; “LAOS 6.-17.7.1989 / VIENTIANE / T. Scholz lgt. [p]”, 1 male in ABCC; “S LAOS prov. / Champasak, 10-50 km S / Pakse, 50-100 m / 23.-25.v.1996 / C. Holzschuh leg. [p]”, 1 male in ABCC; “LAOS centr., 27.iv.-1.v.1997 / 70 km NE Vientiane / BAN PHABAT env., 150m / 18°6.1'N 103°10.9'E / E. Jendek & O. Šauša leg. [p]”, 1 male and 2 females in ABCC, 1 male and 2 unsexed specimens in PPCB; “LAOS, 21°09'N 101°19'E / Louangnamtha pr. / Namtha-Muang Sing / 5.-31.v.1997, 900- / Vít Kubáň leg. -1200 m [p]”, 2 males and 1 female in ABCC; “LAOS north, 6.-11.V.1997 / 20 km NW Louang Namtha / N 21°09.2', E 101°18.7' / ant. 900±100 m / E. Jendek & O. Šauša leg. [p]”, 1 male in ABCC; “LAOS – NE, HUA PHAN prov. / BAN SALUEI, Phu Phan Mt. / 20°15'N 104°02'E, 1500-2000 m / J. Bezděk leg., 26.iv.-11.v.2001 [p]”, 1 female in ABCC; “LAOS, 1.-18.v.2001 /

Bolikhamsai prov. / 18°21'N 105°08'E / Ban Nape (8 km NE) / ~600 m, Vít Kubáň leg. [p]”, 1 male and 1 female in ABCC; “LAOS – CE, Boli Kham Xai prov. / Ban Nape (8km NE), 600m / 18°21'N 105°08'E / Pacholátko lgt., 1.–18.v.2001 [p]”, 3 males and 1 female in ABCC, 6 unsexed specimens in PPCB; “LAOS: N-VIENTIANE Prov. / VANG-VIENG, 300 m / N18°55'23" E102°26'55", / 10.–15.v. & 01.–06.vi.2001, / JIŘÍ KOLIBÁČ leg. [p]”, 1 female in NHMB; “LAOS: S-UDOMXAI Prov., / PAK BENG, 450 m / N 19°53'37", E 101°07'51" / 18–27.v.2001 / JIŘÍ KOLIBÁČ leg. [p]”, 1 male and 1 female in NHMB; “LAOS – Borikhan prov. / Borikhan env., 20 km N of / Muang Pakxan, 16.–20.2003 / O. Šafránek leg. [p]”, 1 male and 1 female in ABCC; “LAOS, Bolikhamxai prov. / 27.v.2003 / PAKKADING / 18°20'N 104°00'E, ~ 200 m, / M. Brancucci leg. [p]”, 1 female in NHMB; “LAOS, Vientiane prov. / Lao Pako env., 200 m / 55 km NE of Vientiane / 1.–4.v.2004, J. Bezděk leg. [p]”, 1 male and 2 females in ABCC, 1 male and 2 unsexed specimens in PPCB; “NE LAOS, Hua Phan prov. / Ban Saluei Phu Phan Mt. env. / 20°13'N 103°59'E, 1300–2000 m / 6.–18.v.2004, J. Bezděk leg. [p]”, 1 male in ABCC; “LAOS, Phongsaly prov., / BOUN TAI / 18.v.2004, ~580m, / 21°24'N 102°58'E / M. Brancucci leg. [p]”, 1 male in NHMB; “LAOS, Vientiane prov. / Lao Pako env., 200 m / 55 km NE of Vientiane / 19.–22.v.2004, J. Bezděk leg. [p]”, 1 male in ABCC; “LAO-NE, Hua Phan prov., / 20°11'N 103°12'E, / BAN SAKO (N env.) / 16.v.2007, 750–900m, / M. Brancucci leg. [p] // NHMB Basel / expedition to / Laos, 2007 [p]”, 2 females in NHMB; “C. – LAOS / 1997 [p]”, 1 female in HKCT; “LAOS: Vientiane prov.: Phou / Khao Khouay, 18°20.369'N / 102°48.523'E, 700–800m / 25–30.V.2008, leg. A. Solodov- / nikov & J. Pedersen [p] // nr. strongly disturbed primary / rainforest; on light; ZMUC / collection [p]”, 1 male and 3 females in ZMUC; “LAOS-NE, Xieng Khouang / prov., 19°38.20'N 103°20.20'E, / Phonsavan (30 km NE): / PHOU SANE Mt., 1420 m, / 10.–30.v.2009, Z. Kraus leg. [p] // NHMB Basel, NMPC Prague / Laos 2009 Expedition: / M. Brancucci, M. Geiser, / Z. Kraus, D. Hauck, V. Kubáň [p]”, 1 female in NHMB; “LAOS, Houa Phan Prov., / Ban Meuang Van near Muang Et, / 20°49–50'N/103°59'-104°01–02'E, / 2.–5.vi.2009, 300–800 m, / Michael Geiser leg. [p] // NHMB Basel, NMPC Prague / Laos 2009 Expedition: / M. Brancucci, M. Geiser, / Z. Kraus, D. Hauck, V. Kubáň [p]”, 1 female in NHMB; “LAOS, ATTAPEU prov. / ATTAPEU city / (at light), ca. 100 m / 14°48.3'N, 106°49.9'E / Jiří Hájek leg., 28.iv.2010 [p]”, 1 male in NMPC; “LAOS, ATTAPEU prov. / Annam Highlands Mts. / Dong Amphan NBCA, ca. 1160m / Nong Fa [crater lake], env. / 15°05.9'N, 107°25.6'E / Jiří Hájek leg., 30.iv.–6.v.2010 [p]”, 1 male and 1 female in NMPC; “LAOS, Attapeu prov. / Annam Highlands Mts. Dong Amphan / NBCA, ca. 1160 m NONG FA (crater lake) env. / 15°05.9' N, 107°25.6' E / St. Jakl lgt., 30.4.–6.5.2010 [p]”, 3 males and 1 female in ABCC; “LAOS, SEKONG Prov. / ca. 12 km S. Sekong / TAD FAEK waterfalls (at light) / 15°14.7'N, 106°45.1'E / St. Jakl lgt., 8.–12.05.2010 [p]”, 1 male and 2 females in ABCC; “LAOS, ATTAPEU prov. / Bolavens Plateau, bridge ca. / 4 km E TAD KATAMTOK (at light) / 15°07.8'N, 106°40.1'E, 260 m / Jiří Hájek leg., 11.–12.v.2010 [p]”, 1 female in NMPC; “LAOS, SALAVAN prov. / ca. 16 km NW Salavan (at light) / broken bridge over SE DON river / 15°47.4'N, 106°17.5'E, 150 m / Jiří Hájek leg., 15.v.2010 [p]”, 1 male and 1 female in NMPC; “LAOS, Xieng Khouang Prov. / 18°59'–19°03'N/103°22–25'E, / Ban Thaviang env. / 17.–21.v.2010, 400–600 m, / M. Geiser & D. Hauck leg. [p] // village, agricultural land, secondary / forest, degraded and pristine primary / forest, hand coll., sweeping, beating, / leaf litter sieving, coll. in small trees / and at flowering trees, at light in village [p] // NHMB Basel, / Laos 2010 Expedition: / M. Brancucci, M. Geiser, D. Hauck [p]”, 1 male in NHMB; “LAOS, Louang Prabang Prov. / 19°33–34'N/101°57'E, / Thong Kyany env. / 670–1160 m, 30.vi.–1.vii. 2010 / M. Brancucci & M. Geiser leg. [p] // village, agricultural and ruderal / lands, secondary and primary / forest, hand coll., sweeping, / coll. at light in village and light tramping at forest edge [p] // NHMB Basel, / Laos 2010 Expedition: / M. Brancucci, M. Geiser, D. Hauck [p]”, 2 females in NHMB; “LAOS, Xieng Khouang Prov. / 19°30'02"N/103°06'47"E, / ca. 10 km W Phonsavan / 1070 m, 3.vii. 2010 / M. Brancucci & M. Geisler leg. [p] // degraded Pinus forest; / hand collecting and / collecting in water puddles [p] // NHMB Basel, / Laos 2010 Expedition: / M. Brancucci, M. Geiser, D. Hauck [p]”, 1 female in NHMB; “LAOS, Louang Namtha prov., / MUANG SING town, 700 m, / 21°11'N/101°09'E, / 29.–30.IV.2011, M. Geiser leg. [p]”, 1 female in NHMB; “NE-LAOS; Hua Phan prov.; Ban / Salduj, Phou Pan (Mt.) ~20°12'N, / 104°01'E; 1300–1900 m; / 01.–31.V.2011; leg. C. Holzschuh / Ankauf ZFMK Bonn 2011 [p]”, 7 males and 8 females in ZFMK; “LAOS, Bolikhamsay prov., / Pakkading, Ban Phone Kham env. / 200–300 m, / 18°19'N/104°08'E, / 23.–29.V. 2011 [p] // NHMB Basel, / Laos 2011 Expedition: / M. Brancucci, M. Geiser, / D. Hauck, Z. Kraus, / A. Phantala & E. Vorigphachan [p]”, 4 males and 3 females in NHMB; “LAOS, Savannakhet prov., / Phou Xang He NBCA, ca. 5km / SW Ban Pa Phaknau, 250–400 m, / 17°00'N/105°38'E, / 31.V.–6.VI.2011 [p] // NHMB Basel, / Laos 2011 Expedition: / M. Brancucci, M. Geiser, / D. Hauck, Z. Kraus, / A. Phantala & E. Vorigphachan [p]”, 1 male and 1 female in NHMB; “LAOS, Attapeu prov., / Thong Kai Ohk, Ban Kachung / (Mai) env., 1200–1450 m, / 15°01–02'N/107°26–27'E, /

10.–24.VI.2011 [p] // NHMB Basel, / Laos 2011 Expedition: / M. Brancucci, M. Geiser, / D. Hauck, Z. Kraus, / A. Phantala & E. Vorigphachan [p]”, 1 male in NHMB; “LAOS, Bokeo prov. / 20°16'N/100°24'E / HOUAY XAY town, 400m / 2.v.2012, M. Geiser leg. [p] // NHMB Basel / Expedition Laos 2012 [p]”, 1 male in NHMB. **Myanmar:** “BURMA, Phadaw / 15°25'N 98°30'E / Aug. 1986 / W. Thielen leg. / ZMUC coll. [p]”, 1 female in ZMUC.

Thailand: “Bangkok [h]”, 1 male in ISNB; “Siam / Gyldenst. [p]”, 2 females in NHRS; “Siam [h] // Coll. / Jensen-Haarup [p]”, 1 female in ZMUC; “THAILAND / 20 km NE Kampot / (U.S. farm) / 5. viii. 19?? / Peter Skafte leg. [p]”, 1 male in ZMUC; “Siam / Praë / 1932 [h]”, 1 male in ZMUC; “Prae Siam / 1933 / Paul Fogh [h] // Coll. / Rosenberg [p]”, 1 male in ZMUC; “SIAM: Khao Sabap. / Chantaboon / 1936 / J. Macbeth [p]”, 1 male in BMNH; “Thailand / Petchabun / 16. 8. 1979 [p]”, 3 males and 4 females in MFNB; “Thailand, 7 km NW of Fang / Horticultural Experimental / Station / 30.x.–2.xi. 1979 / Zool. Mus. Kopenhagen Exped. [p]”, 1 male in ZMUC; “Nord-Thailand / Chieng-Mai-Prov. / Ban Yang, 24 km / südlich von Fang / 11. Okt. 1982 / H. J. Bremer leg. [p]”, 1 female in MFNB; “NW THAILAND / 24.–27.4.1991 / CHOM THONG / LEG. P. PACHOLÁTKO [p]”, 1 male and 1 female in ABCC, 2 males and 2 unsexed specimens in PPCB; “NW Thailand, 9.–16. V. / MAE HONG SON 1991 / Ban Huai Po 1600 m / leg. P. Pacholátko [p]”, 2 males and 1 female in ABCC, 2 females in PPCB; “NW THAILAND / MAE HONG SON / 28.4.–3.5.1992 / leg. P. Pacholátko [p]”, 3 males in ABCC, 5 males in PPCB; “THAILAND / V.93 Ko / Phangan Isl. G. / Werner leg. [p]”, 3 males in ABCC; “THAI 17.–19.v.1993 / LOM SAK – DAN SAI / Pacholátko & / Dembický leg. [p]”, 2 males and 1 female in ABCC, 2 males in PPCB; “W Thailand / Kanchanaburi / 31.3. – 1.4. 1994 / J. Horák lgt. [p]”, 2 females in ABCC; “THAILAND Provinz / Chonburi 5km E / Pattaya Elefantcamp / 30.I.1995 fc. Weigel [p]”, 1 male and 4 females in NMEC; “THAILAND / Kho Samet / 19.–21.2.1997 / R. Rozkošný leg. [p]”, 1 male and 1 female in NMPC; “SE THAILAND; 1.–20.10.1997 / KRABOK KOO; 20 km SE / Sanam Khai Ket / J. Mlikovský lgt. [p]”, 2 males and 1 female in ABCC, 1 male in PPCB; “Thajsko-SamRoiYot / Sam Phraya / 14.3.1998 / P. Hesoun [p]”, 1 male in ABCC; “THAI, NE Loei prov., Phu / Kradung N.P., 1000m / 16°52'N 101°49'E, 16.– / 17.v.1999, D. Hauck lgt. [p]”, 1 female in ABCC; “THAILAND-N, prov. / Chiang Mai, Chiang / Mai, 29.3.2000 / lgt. R. Šigut [p]”, 1 male in ABCC; “THAILAND-N, prov. / Chiang Mai, Tha Ton / 5.–7.4.2000 / lgt. R. Šigut [p]”, 2 males and 1 female in ABCC; “THAILAND-NE, prov. / Loei, Loei / 14.–15.4.2000 / lgt. R. Šigut [p]”, 1 female in ABCC; “THAILAND-NE, prov. / Loei, Phu Kradung / 17.–18.4.2000 / lgt. R. Šigut [p]”, 1 female in ABCC; “THAILAND / Kho Samet Reserve / 20.–26.4.2000 / R. Rozkošný leg. [p]”, 1 male and 8 females in NMPC; “Coll. R. I. Sc. N. B. / Thailande (Loei) / Na Haeo (bio. station) / 05–12.V.2001 / Light trap / Leg. Constatnt & Grootaert [p, yellow label]”, 5 females in ISNB; “Coll. I.R.Sc.N.B. / Thailand (Rayong) / Koh Samed Island / 15.–17.V.2001 / Leg. Konstant & Grootaert [p, yellow label]”, 2 males and 1 female in ABCC, 13 males and 10 females in ISNB; “Coll. I.R.Sc.N.B. / THAILAND (Loei Prov.) / Na Haeo (Field Res. St.) / 15–19.V.2003, Light Trap / Leg. Constatnt&K. Smets [p, yellow label]”, 1 male and 2 unsexed specimens in ISNB; “Thailand, Nan prov. / Ban Huay Kon env. / 13.–26.V. 2002 / P. Průdek & M. Obořil leg. [p]”, 1 male in PPCB; “THAILAND, Nan Prov. / Ban Huay Kon env. / 27.V.–10.VI.2002 / P. Průdek & M. Obořil [p]”, 1 male and 1 female in ABCC, 1 male and 1 female in PPCB; “THAILAND, Nan Province / Mae Charim Natl. Park; 285 m / 18°36'N 100°59'E; L-477 / pan UV It. trap; 22 April 2003 / Vitheepradit, Prommi, Setaphan [p]”, 1 male in UMRM; “NE Thailand, Loei prov. / Phu Rua NP / 21.–22.V.2004 / Masatoshi Takukawa lgt. [p]”, 1 male and 1 female in ABCC; “Phu Rua NP (900-13 / 00m), Loei P., NE / Thai 21.–25.V.2004 / Takakuwa, M. leg. [p]”, 1 male in ABCC; “Thailand, Kanchanaburi pr. / Erawan National Park, / dry primaval forest, / 17.–18.9.2009, V. Hula lgt. [p]”, 1 male and 1 female in ABCC; “Nanong Tum, Khon / Kaen, NE Thailand / 9-V-2011 / Keiichi Takahashi leg. [p]”, 1 male in ABCC; “Nanong Tum, Khon / Kaen, NE Thailand / 10-V-2011 / Keiichi Takahashi leg. [p]”, 1 male in ABCC; “THAILAND: Nakhon Nayok / Prov.; Wang Takrai Wildlife / Sanctuary; 8–9 March 2012 / coll: R. W. Sites [p] // 43 m / 14°19.689'N / 101°18.262' [p]”, 1 male and 4 females in UMRM.

Vietnam: “CHAPO / prov. de Laokay / Ht – Tonkin [p]”, 2 males in ISNB; “Tonkin / Montes Maouson / April, Mai 2-3000' / H. Fruhstorfer [p]”, 1 male in MFNB; “Tonkin / Collection Le Moul't [p]”, 1 female in MSNG; “Tonkin / Than Moi [p]”, 1 female in ISNB; “Annam / Phuc-Son / Nov. Dez. / H.Fruhstorfer [p]”, 1 male in ISNB and 1 female in NMEC; “Cua Tung / Annam [h]”, 1 male and 2 females in MSNG; “Annam / An Do Kay [p] // R. Mus. Hist. Nat. / Belg. I.G. 12.595 [p]”, 1 male in ABCC, 1 male and 3 females in ISNB; “H. / Donckier / Saigon [h, rounded label]”, 1 males and 2 females in RMNH; “Dr. / Pipitz / Saigon [h, rounded label]”, 1 male in RMNH; “HOABINH / TONKIN / Juin 1915 [p]”, 1 male nad 1 female in ISNB; “Annam / Hué / Feb. 1917 / R.V. de Salvaza [p]”, 1 male in BMNH; “Bao Loc / Vietnam / V-61 [h]”, 1 female in UMRM; “N. VIET NAM (Tonkin) / HA NOI (city) / 4.–5.V.1990 / P. Pacholátko leg. [p]”, 1 male in ABCC; “10.–11.5.1990 YEN SAI /

HOANG LIEN SON Distr. / N VIETNAM / JAN HORÁK Leg. [p]”, 1 female in ABCC; “VIETNAM NORTH / HANOI / 6.–25.5. 1990 / O. ŠAUŠA LGT. [p]”, 1 male in ABCC and 1 female in PPCB; “VIETNAM / SAIGON / PETRŽELKA LG. [p, upper side] // 18.4.91 [h, under side]”, 1 female in MMBC; “S VIETNAM, 1.–15.5. 1994 / Nam Cat Tien Nat. Park / P. Pacholátko & / L. Dembický leg. [p]”, 3 males in ABCC and 1 male in PPCB; “S VIETNAM, 14.10N 108.30E / 40 km NW of An Khe / Buon Luoi, 620–750m / 28.3.–12.4.1995 / Pacholátko & Dembický leg. [p]”, 1 male in ABCC; “VIETNAM / Tonkin VII.95 / env. Chapa / SINIAEV leg. [p]”, 1 female in ABCC; “VIETNAM / Tam Dao / VII.97 / BERNAUD lgt. [p]”, 1 female in ABCC; “VIETNAM / Tam Dao / viii. 1999 / R. Boča leg. [p]”, 1 female in ABCC; “Coll. I.R.Sc.N.B. / VIETNAM: Me Linh / Light Trap 20–24-VIII-2010 / Leg. J.Constant&P.Limbourg / I.G.31.668 [p, yellow label]”, 1 female in ISNB; “Coll. I.R.Sc.N.B. / VIETNAM: Me Linh / Light Trap 20–24-VIII-2010 / Leg. J.Constant&P.Limbourg / I.G. 31.668 [p, yellow label]”, 1 male and 2 females in ISNB; “Coll. I.R.Sc.N.B. / VIETNAM: Me Linh / Night Collecting / 20–24-VIII-2010/I.G. 31.668 / Leg. J.Constant&P.Limbourg [p, yellow label]”, 1 female in ISNB; “VIETNAM: Dong Nai Prov. / Long House at Cat Tien / National Park; Vam Ho / Lake; 6 May 2012; L-1332 / R. W. Sites & G. Abraham [p] // blacklight; 133 m / 11°23.225’N / 107°21.078’ [p]”, 2 males and 1 female in UMRM.

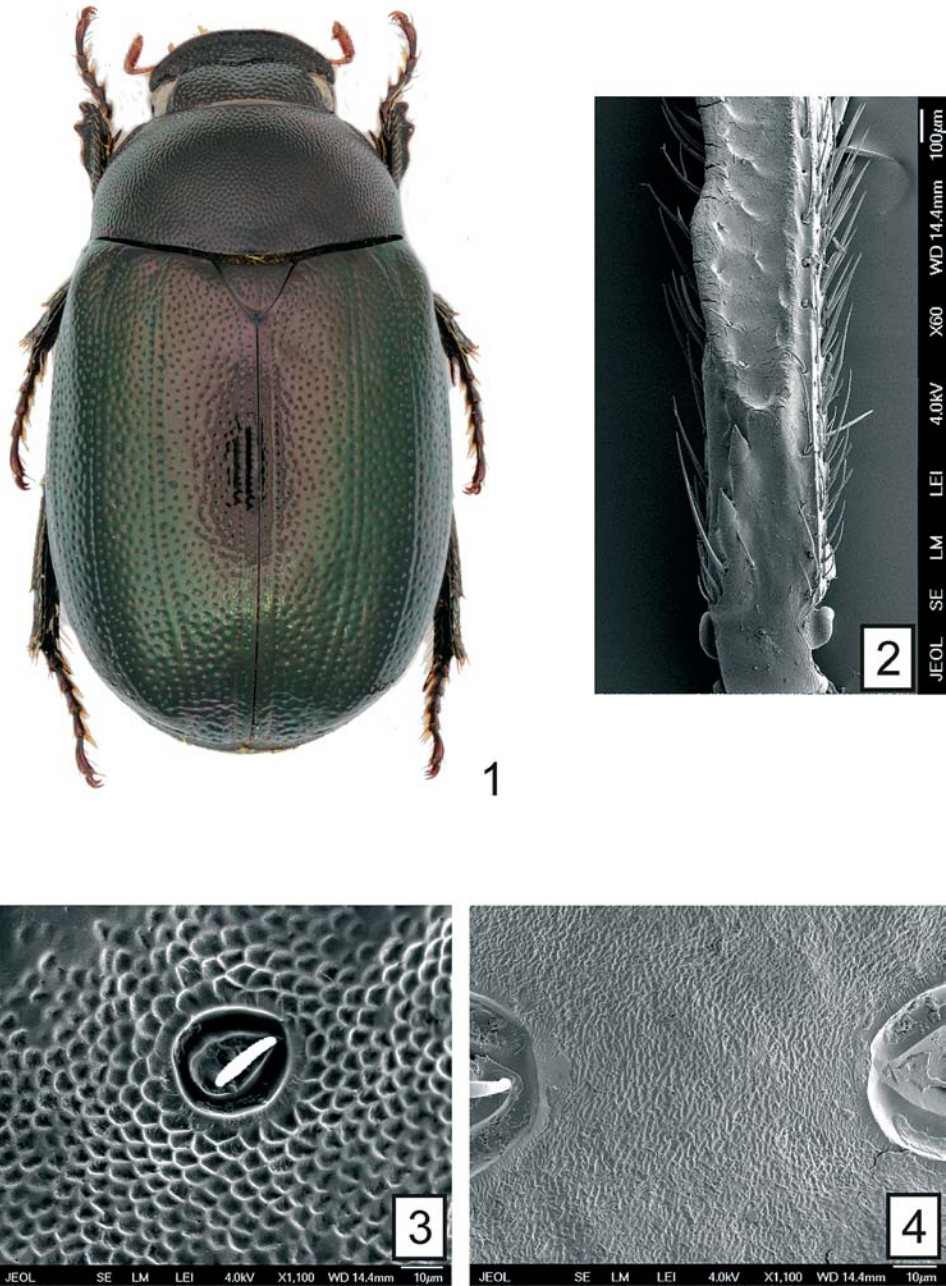
Redescription. Males. Body length 7.8–11.1 mm (LT of *A. cribricollis*: 10.6 mm), 56 specimens measured. Body broadly ovate, convex, whole surface black (in teneral specimens chestnut brown to brownish-black) with metallic lustre (Fig. 1). Antennae and palpi yellowish. Dorsal surface of head (with the exception of a few macrosetae on lateral part of eye-canthus), pronotum and disc of elytra bare, lateral and apical part of elytra covered with extremely short and scarcely visible macrosetae, thus also appearing bare. Legs and ventral surface of the body with pale, sparse but easily-visible macrosetation.

Head. Clypeus transverse, broadly round, with coarse and dense punctures. Frons and vertex punctate as on clypeus, anterior part of frons somewhat less densely so. Fronto-clypeal suture clearly visible. Eye-canthus prominent, largely fused with clypeus, border between eye-canthus and clypeus invisible. Eye large, but only slightly extended beyond canthus. Antenna with ten antennomeres; club trimerous, shorter than antennal shaft. Antennomeres 1–7 with a few isolated, erect macrosetae, club sparsely covered with moderately long, semirecumbent macrosetae. Labrum transverse, narrow, completely covered by clypeus, thus not visible from above, with coarse irregular punctures bearing moderately long erect macrosetae. Mandibles stout, slightly asymmetrical.

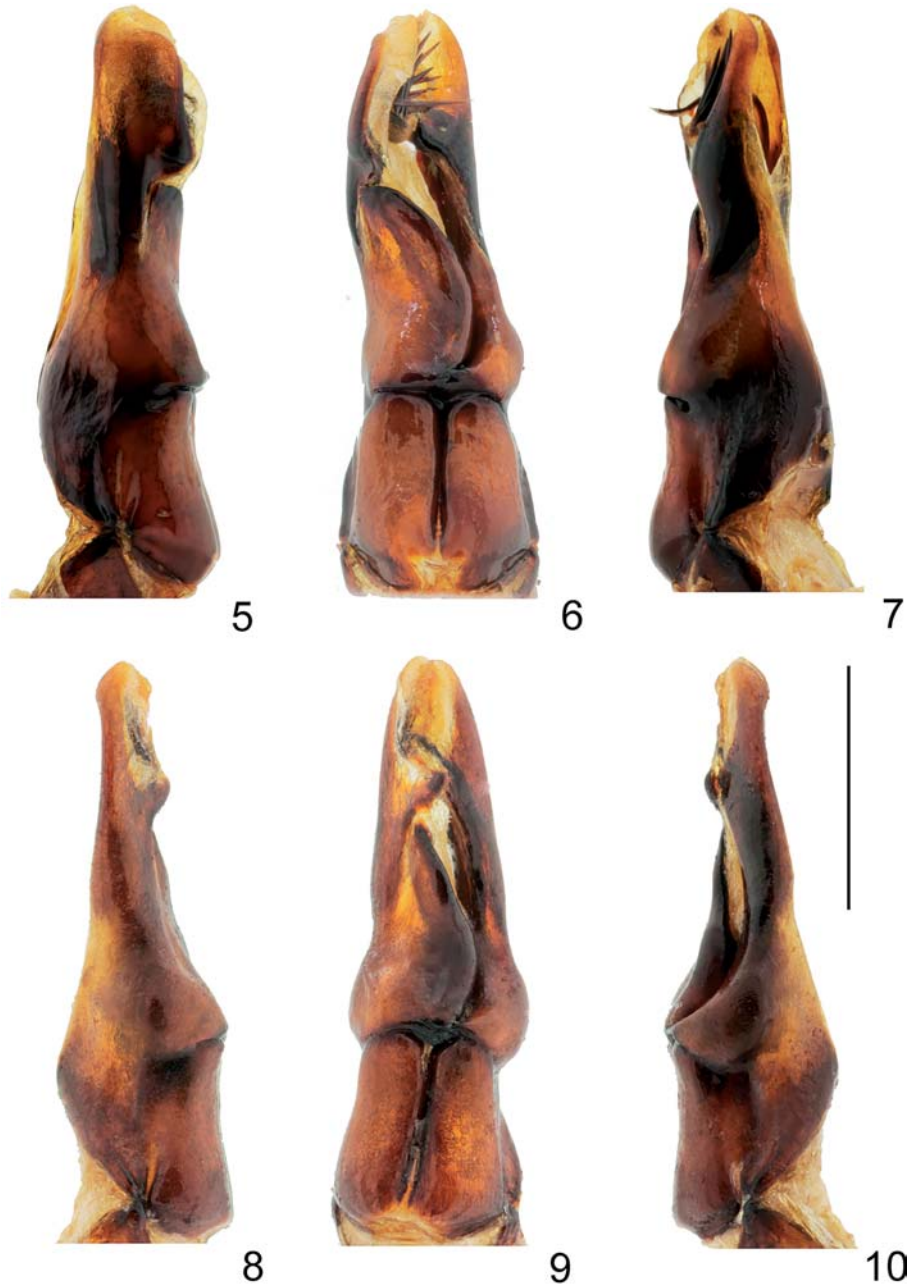
Pronotum transverse, convex, widest at base. Anterior angles prominent, acute angulate and somewhat flattened with round apex, posterior angles obtuse, broadly round. Anterior margin with membranous border, anterior marginal line almost complete, in some specimens indistinct or briefly interrupted midway. Lateral marginal line complete, basal marginal line absent. Punctuation coarse, dense, nearly regular.

Scutellum triangulate, slightly wider than long, apex round; sparsely and coarsely punctate, except for impunctate apical quarter, completely bare.

Elytron convex, widest around midway, covered with coarse, irregular punctures and two smooth, very slightly elevated costae. Surface lustrous, except for distinctly matt area apically. Matt area densely covered with micropunctures (Fig. 3), its size variable between specimens from quite a large area occupying the apical twelfth of the elytron to a very narrow strip just along the latero-apical border of the elytron; basal half of epipleuron with a row of short, recumbent macrosetae; apical half of lateral margin of elytron with membranous border. Macropterous.



Figs 1–4. *Apogonia crabricollis* Burmeister (1–3) and *Apogonia ventralis* Moser (4): 1 – habitus, dorsal view (specimen from Laos, Lao Pako env., 9.2 mm); 2 – basal part of left protibia, lateral view; 3, 4 – apical part of elytra, detail of matt surface.



Figs 5–10. Male genitalia of *Apogonia cribricollis* Burmeister (5–7) and *A. ventralis* Moser (8–10): 5, 8 – parameres in left lateral view; 6, 9 – parameres in dorsal view; 7, 10 – parameres in right lateral view. Scale bar = 1.0 mm.

Legs. Femora lustrous, distinctly punctate, punctures arranged in a number of longitudinal rows, each puncture bearing a short, recumbent macroseta. Protibia tridentate, basal tooth in some specimens subobsolete, terminal calcar present. Outer margin of protibia not straight, forming distinct angle in basal third (Fig. 2), angle associated with 1–2 small teeth basally. Meso- and metatibia slightly expanded towards apex, covered with semirecumbent macrosetae, with one oblique external carina armed with 4–6 short, stout macrosetae. Terminal calcars of meso- and metatibia flattened, almost blunt apically, superior calcar about two times as long as inferior calcar. Pro-, meso- and metatarsomeres 1–4 oblong, with dense macrosetaceous pad ventrally, and covered with isolated semirecumbent macrosetae dorsally. Pro-, meso- and metatarsomere 5 elongate, with a few isolated macrosetae ventrally and dorsally. Claws equal in length, cleft apically.

Ventral surface of thorax densely covered in setiferous punctures, macrosetae short, recumbent. Abdominal ventrites 3–7 covered in irregular punctures bearing short recumbent or semirecumbent macrosetae, becoming denser laterally. Lateral sides of abdominal ventrites 3–7 armed with distinct transversal carina. Ventricle 7 narrowed midway. Ventricle 8 almost completely retracted beneath ventricle 7, impunctate, bare, only apical margin with a row of semirecumbent macrosetae. Propygidium (= abdominal tergite 7) and abdominal ventricle 7 completely fused. Pygidium convex, broadly round apically, irregularly coarsely punctate, covered with moderately long semirecumbent macrosetae, except for smooth, elevated midline. Apical and lateral margins of pygidium distinctly bordered.

Male genitalia. Parameres asymmetrical (Figs 5–7), complex, bare, fused basally. Right paramere armed with a cluster of about 20 thick, recumbent, stout spines (Figs 6–7).

Females differ from males in the following characters: body length 8.1–11.4 mm (41 specimens measured), metafemora broader, protarsomeres ventrally with less dense macrosetae, abdominal ventricle 7 not narrowed midway, pygidium less convex.

Differential diagnosis. *Apogonia cribricollis* belongs to a species-scant group of *Apogonia* sharing a characteristic shape of the protibia (Fig. 2) and with a matt apex to the elytra as well. Superficially, this species is allied to the widely distributed *Apogonia ventralis* Moser, 1913. Both species are recognizable by the structure of the matt apex to the elytra, which is micropunctured in *A. cribricollis* (Fig. 3), but covered in short wrinkles in *A. ventralis* (Fig. 4). Moreover, the male genitalia of the two species are different (Figs 5–10). North-eastern Indian *Apogonia assamensis* Moser, 1919 is most similar to *A. ventralis* in the structure of the matt apex to the elytra as well as in the shape of the male genitalia. *Apogonia blanchardi* Ritsema, 1898, known from NE India (West Bengal, Chota Nagpur plateau, Orissa), is characterised by its strongly convex pronotum covered in very sparse and fine punctures. *Apogonia basiventris* Ritsema, 1913, described from southern Myanmar, differs from all these species in the presence of short, erect macrosetae on the whole surface of pronotum and in having an elytral disc.

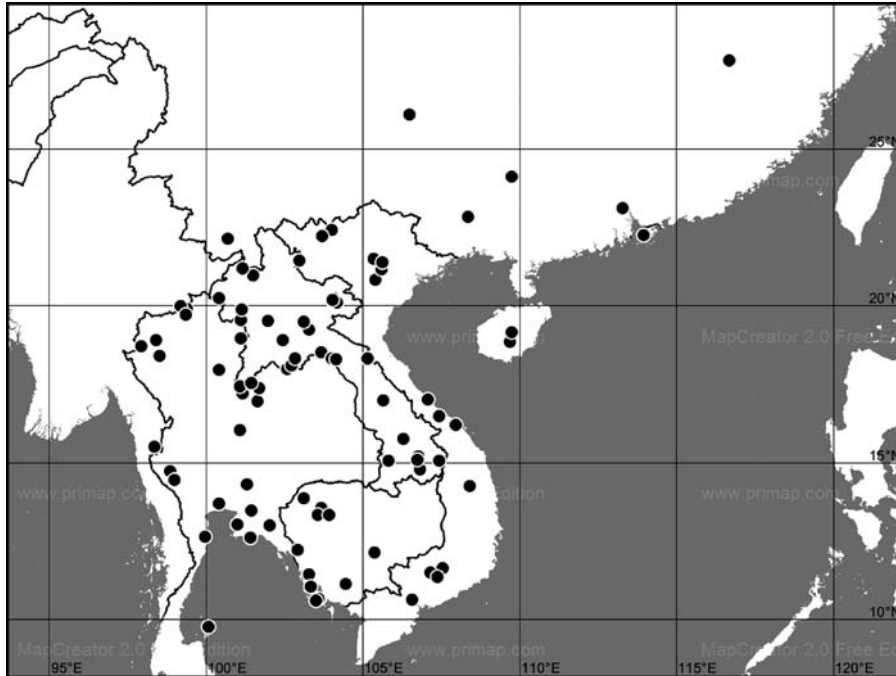


Fig. 11. Distribution map of *Apogonia cribricollis* Burmeister based on the specimens examined.

Distribution. The species is widely distributed in SE Asia, known from Laos (KOBAYASHI 2010), Vietnam (MOSER 1908), Myanmar (ARROW 1946) and from the Chinese provinces of Fujian (ZHANG & LUO 1992), Hong Kong (BURMEISTER 1855) and Guizhou (ZHI & ZHANG 2005; ZHANG & ZHI 2006). First country records from Cambodia, Thailand and Chinese provinces Guangdong, Guangxi and Hainan (Fig. 11).

There exists an erroneous geographical record for *A. cribricollis*. BARLOW (1899) reported this species for India: Assam. This record is evidently based on misidentified specimens, most probably of *Apogonia assamensis* Moser, 1919. Both STEBNICKA (1980) and KIM (2001) mentioned *A. cribricollis* from the Korean Peninsula. Nevertheless, the male genitalia figured (STEBNICKA 1890: Figs 145–146; KIM 2001: Fig. 3) clearly refer to *A. niponica* Lewis, 1895 (see BEZDĚK 2009 for more details). *Apogonia cribricollis* should thus be removed from the Indian and Korean faunas.

Acknowledgements

I am grateful to the persons and institutions for the loan of specimens and for making material available to me. Paul K. Lago (University of Mississippi, USA) negotiated loans from the University of Missouri. Richard Sehnal (Czech University of Life Science, Prague, Czech Republic) took digital photos. Blaine A. Mathison (Atlanta, USA) kindly helped improve my English.

References

- ARROW G. J. 1946: Entomological results from the Swedish expedition 1934 to Burma and British India. *Arkiv för Zoologi* **38A** (No. 9): 1–33.
- BARLOW E. 1899: List of the Melolonthini contained in the collection of the Indian Museum. *Indian Museum Notes* **4**: 234–273.
- BALTHASAR V. 1968: Neue Scarabaeiden-Arten. *Beiträge zur Entomologie* **18**: 953–958.
- BEZDĚK A. 2004: Catalogue of Diplotaxini (Coleoptera: Scarabaeidae: Melolonthinae) of the Old World. *Zootaxa* **463**: 1–90.
- BEZDĚK A. 2006: Scarabaeidae: Melolonthinae: Diphycerini, Diplotaxini, Heptophyllini. In: LÖBL I. & SMETANA A. (eds): *Catalogue of Palaearctic Coleoptera. Vol. 3*. Apollo Books, Stenstrup, pp. 181–184.
- BEZDĚK A. 2008: Synonymical notes on *Apogonia cupreoviridis* and *A. nigroolivacea* (Coleoptera: Scarabaeoidea: Melolonthidae: Diplotaxini). *Annales Zoologici* **58**: 71–77.
- BEZDĚK A. 2009: Synonymical and geographic distribution notes for *Apogonia niponica* Lewis, 1895 (Coleoptera: Scarabaeidae: Melolonthinae). *The Coleopterists Bulletin* **63**: 438–444.
- BURMEISTER H. 1855: *Handbuch der Entomologie. Vierter Band, Zweite Abtheilung. Coleoptera Lamellicornia Phyllophaga chaenochela*. Theod. Chr. Fr. Enslin, Berlin, 569 pp.
- DALLA TORRE K.W. VON 1912: Fam. Scarabaeidae. Subfam. Melolonthidae. In: JUNK W. & SCHENKLING S. (eds.): *Coleopterorum Catalogus. Vol. XX, pars 49*. W. Junk, Berlin, pp. 135–209.
- FREY G. 1969: Über zwei *Apogonia*-Arten aus der äthiopischen Region (Melolonthidae, Col.). *Acta Musei Moraviae, Scientiae Naturales* **54**: 183–184.
- GEMMINGER M. & HAROLD E. VON 1869: *Scarabaeidae. Catalogus Coleopterorum Hucusque Descriptorum Synonymicus et Systematicus. Vol. 4*. E.H. Gummi, Monachii, pp. 979–1346.
- ICZN 1999: *International Code of Zoological Nomenclature. Fourth edition*. International Trust for Zoological Nomenclature, London, 306 pp.
- KIM J. I. 2001: Economic Insects of Korea 10. Coleoptera (Scarabaeoidea II). *Insecta Koreana suppl.* **17**: 1–191 (in Korean, English summary).
- KOBAYASHI H. 2009: Some new species of the genus *Apogonia* (Coleoptera, Scarabaeidae, Melolonthinae) from Southeast Asia, III. *Kogane* **10**: 11–34.
- KOBAYASHI H. 2010: Revisional notes of the genus *Apogonia* from Laos (Coleoptera, Scarabaeidae, Melolonthinae). *Kogane* **11**: 41–66.
- LACROIX M. 2010: *Melolonthinae afrotrropicalia (Scarabaeoidea, Melolonthidae). Genera et catalogue commenté*. Editions Marc Lacroix, Paris, 277 pp. + 192 plates.
- MOSER J. 1908: Verzeichnis der von H. Fruhstorfer in Tonkin gesammelten Melolonthiden. *Annales de la Société Entomologique de Belgique* **52**: 325–343.
- MOSTERT L. E. & SCHOLTZ C. H. 1986: Systematics of the subtribe Scarabaeina. *Entomology Memoir* **65**: 1–25.
- PENG Y.-Q., YANG D.-R., WANG Q.-Y., ZHOU F. & LUO J.-R. 2002: On the structure and distribution of the insect communities of *Ficus auriculata*. *Acta Entomologica Sinica* **45**: 629–635 (in Chinese, English abstract).
- RITSEMA C. 1891: Alphabetische naamlijst der beschreven soorten van het melolonthiden-genus *Apogonia* Kirby. *Tijdschrift voor Entomologie* **34**: 93–97 (in Dutch).
- SABATINELLI G. 1993: Catalogue of the Scarabaeoidea Melolonthidae from Himalaya and North India: Macroductylini, Hopliini, Diplotaxini, Melolonthini and Sericini (Coleoptera). *Memorie della Società Entomologica Italiana* **71**(1992): 593–636.
- SCHUEUERN J. 1988: Zur Taxonomie der Gattung *Liatongus* Reitter, 1892, mit Beschreibung einer neuer Art aus Bhutan (Coleoptera, Scarabaeidae). *Entomologica Basiliensia* **12**: 305–317.

Apogonia reticulata Frey – a synonym for *A. cribricollis* Burmeister

- STEBNICKA Z. 1980: Scarabaeoidea (Coleoptera) of the Democratic People's Republic of Korea. *Acta Zoologica Cracoviensia* **24**: 191–297.
- WU CH. F. 1937: *Catalogus Insectorum Sinensium. Volume III*. The Fan Memorial Institute of Biology, Peiping, x + 1312 pp.
- ZHANG Y. & LUO X. 2002: Melolonthidae. In: HUANG P. (ed.): *Fauna of insects in Fujian province of China. Vol. 6*. Science and Technical Publishing House, Fuzhou, pp. 439–453 (in Chinese, English title).
- ZHANG Y. & ZHI J. 2006: Melolonthidae, Rutelidae, Cetoniidae, Sericidae, Dynastidae, Aphodiidae and Scarabaeidae. In: JIN D. & LI Z. (eds): *Insects from Chishui spinulose tree fern landscape*. Guizhou Science and Technology Publishing House, Guiyang, pp. 182–190 (in Chinese, English abstract).
- ZHI J. & ZHANG Y. 2005: Melolonthidae, Rutelidae, Cetoniidae, Sericidae, Scarabaeidae and Aphodiidae. In: JIN D. & LI Z. (eds): *Insects from Xishui landscape*. Guizhou Science and Technology Publishing House, Guiyang, pp. 287–299 (in Chinese, English abstract).